



Yarnfield Primary School
SUMMIT LEARNING TRUST



Welcome Trust

The Summit Learning Trust family is currently made up of three secondary schools, four primary schools and a sixth form college educating almost 8000 learners.

All of our academies are located in the Birmingham and Solihull areas which allows us to work closely together for the benefit of all our children, young people and the communities we serve. After another highly successful year, all of our academies have now been judged by Ofsted as 'Good' providers with an increasing proportion of 'Outstanding' features.

We are relentless in our ambition for all our children and young people to make exceptional levels of academic progress and achieve strong portfolios of qualifications. Across Summit, our focus is on developing responsible, knowledgeable, highly skilled, global citizens who will have a positive impact on our communities now and in future years. We are developing our already established links with higher education establishments, local employers and charitable organisations to ensure that all our young people can benefit from these positive partnerships within our wider communities.

Our Trust is committed to providing vibrant learning communities in our schools and college, where our children and young people are happy, safe and supported to work hard. We are all acutely aware of our core purpose of educating all learners through exceptional teaching and learning, underpinned by high levels of care and support and we challenge our children and young people to do their best, every lesson, every day. We strive for all our learners to have as many life choices available to them as possible.

Being part of the Summit Learning Trust family means that all our academies benefit from a wide range of expertise, support and challenge. Leaders, teachers and support colleagues work with each other across our academies to develop and share excellent practice and provide support where needed. Our academies benefit from highly-trained, expert, hard-working and dedicated staff teams who are all committed to providing an outstanding education and the highest levels of care for all our learners. Whilst other schools and colleges struggle to recruit and retain high quality, specialist teachers and support colleagues, we are proud that we attract a high calibre of professionals due to our happy, warm, and hard-working environments and the growing reputation of Summit Learning Trust as a great place to learn and work in.

We pride ourselves on working in partnership with parents, carers and families and hope that this prospectus provides you with an insight into our school. We look forward to welcoming you and working with you.

Vince Green
Chief Executive Officer



Welcome Principal

Welcome to Yarnfield Primary School and 'thank you' for taking the time to find out a little more about us. We are very proud of the children and all their achievements and recognise that each and every person who is involved in the school; both children and adults, thrive and enjoy the experience of being here.

All our adults are highly skilled within their roles and work hard to ensure all children reach their personal best; both academically and socially. We have a reputation for taking great care of our learners and making sure that they have the best resources and learning environment that we can provide. We all work very hard to create a positive atmosphere where everyone can feel happy, secure and valued.

Our vision and aim is to provide an education that meets the needs of all our children and enables them to become successful, confident citizens, who can think critically and creatively. Children only have one chance in education, and it is therefore vital that they are motivated, supported and encouraged to achieve the highest standards. We want them to experience the excitement of learning in a happy, secure and stimulating environment so that each and every child in our care experiences success after success both whilst with us and in the years to come. We aim to provide the good, firm foundation children will need in their future and thus strive to develop the independence, self-esteem and confidence of all pupils, enabling them to learn through the broad, rich and stimulating curriculum we offer.

The ethos of our school is to be a caring, supportive and encouraging one where emphasis is placed upon:

- Warm, friendly relationships between children, staff, parents, carers, governors and with the community in general;
- Active encouragement of initiative and the taking of responsibility;
- All being seen as equal and valued;
- Recognition of varying individual needs and an effort to match these with the content of both the National and wider curriculum and approaches used in order to achieve the highest standards.

We encourage the children to be pro-active in owning their learning journey whilst at the school and thus encourage the children's voices are heard and shine through. We strongly believe in the importance of parents, carers and school working closely together in partnership for the benefit of all our children and thus encourage families to be actively involved in their child's learning.

We hope that the information that follows will give you an insight into our school. However, you are most welcome to visit the school to see us and the children at work.

Principal





Vision and Mission

Our mission is to deliver exceptional education to children and young people in the West Midlands, enabling them all to have successful, happy lives and make a positive impact on their communities.

We do this by:

- Providing all our children and young people with the highest levels of expectation, educational provision and care.
- Achieving the highest levels of academic progress for all our learners.
- Nurturing our children and young people in academies where safety and wellbeing are of paramount importance.
- Providing a rich educational experience for all our learners.
- Adopting a consistently high level of inclusivity and equity for all students, colleagues and stakeholders across our trust.
- Contributing positively to the communities which our academies serve.
- Valuing all our people and developing them as professionals and lifelong learners.
- Working intelligently to maximise the effective and efficient use of our resources.
- Working ethically and with integrity, civility and respect.

As part of the Summit Learning Trust family, we embed our Trust values into our school life:

Success through Endeavour:

We work hard and develop resilience to ensure that we are able to collectively and positively overcome any barriers that we face

Ambition through Challenge:

We are relentlessly ambitious for all our students and colleagues and challenge them to do their best, every lesson, every day

Strength through Diversity:

We are truly inclusive, embrace each other's differences and backgrounds and respect each other's views and beliefs

A Stimulating Environment

At Yarnfield Primary School we believe a stimulating environment is important for children. We pride ourselves on the high-quality displays around our school which offer immersive experiences for our learners to enrich their cultural capital. Classroom environments support current learning through informative working walls, tactile resources, artefacts and inviting classroom libraries. Our corridors reflect the rich and diverse curriculum offer at Yarnfield.

At the heart of our school is our welcoming library, which learners have access to daily to encourage them to read for pleasure whether this be at home or at school.

Yarnfield offers exciting and stimulating outdoor spaces offering a range of activities for all to enjoy and learn in. This includes a multi-use games area for sports, a variety of outdoor seating areas which supports teaching and learning. We also have a dedicated outdoor space for the Early Years to play and develop in.



Our Rich Curriculum

At Yarnfield, we have designed a curriculum which aims to provide learners with the skills and knowledge they need to achieve in a broad range of subjects through engaging first-hand experiences which broaden their horizons.

Our curriculum motivates and challenges pupils to achieve academic success, promote pupils' creativity and sparks curiosity and excitement about the world, themselves and each other. We offer them a rich and a varied vocabulary to develop their language and communication skills.

Through their learning experiences, our pupils celebrate differences within our diverse school community and prepares them for life in modern Britain. We empower pupils to have an opinion and challenge discrimination and inequalities, and inspire them to create a better, inclusive world.



Enrichment

Learners are offered a variety of enrichment opportunities throughout their time at Yarnfield. From farms to zoos, beaches to museums, every child experiences activities to further develop their knowledge and skills.

We offer a range of workshops to support the wider curriculum. To develop learners' creativity, they are immersed in music and drama sessions, delivered by experts.

To ensure learners are energised for the day, a free breakfast club facility is available. Additionally, there are clubs on offer after school, which are diverse and child centred. These range from cooking, football, dance and art. To promote wider community links, we work across our trust primary schools to facilitate competitions.



Parents, Carers and Community

We strongly believe in the importance of parents, carers and school working closely together in partnership for the benefit of all our children and thus encourage families to be actively involved in their child's learning. Parents and carers are kept up to date on their child's progress and learning every step of the way whilst at Yarnfield Primary School.

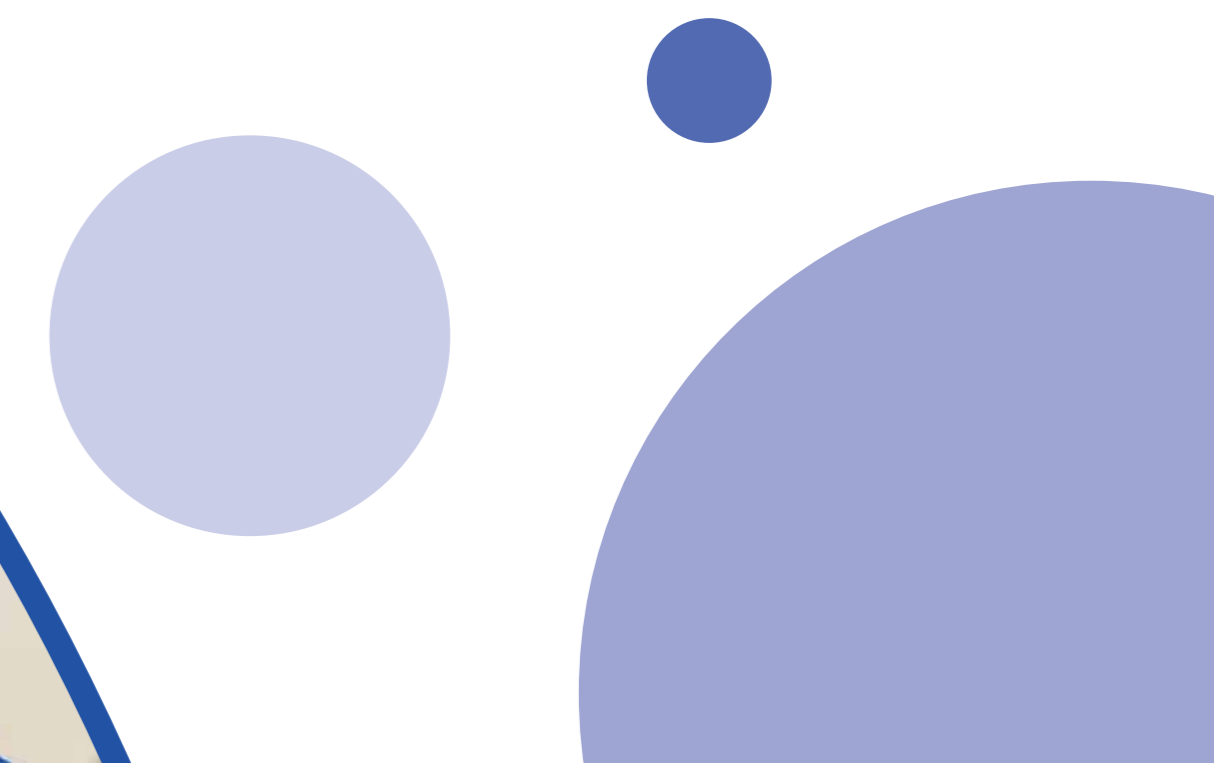
As a school we are always looking for opportunities to engage with parents and carers and hold regular events such as coffee mornings and parent and carer workshops. We welcome parent and carer views and feedback in order to continue to evolve as a community.



Nurturing the Whole Child

The health and wellbeing of our children is a priority at Yarnfield Primary School. We encourage our learners to be safe, respectful and responsible.

A carefully planned Relationships and Health Education curriculum supports every child in our school to be happy and safe. We also have an experienced and dedicated pastoral team who work with learners to ensure they feel safe, secure and achieve their best whilst at Yarnfield Primary School. Assemblies throughout the year focus on key values and celebrations, helping our children to understand the diversity of their world.



Safeguarding and Wellbeing

Yarnfield Primary School is committed to safeguarding and promoting the welfare of children. We expect all staff and volunteers to share this commitment and we work closely with the Birmingham Safeguarding Children Board.

It is our firm belief that the way in which we nurture and care for our young people is intrinsic to their success. Highly effective systems support achievement, self-belief, and inspiration.

Whilst the prime focus of Yarnfield Primary School is to secure the best educational outcomes for our children, we place the safety and welfare of our children at the heart of our school's culture and ethos.

Yarnfield Primary School offers an environment where children feel warmly supported and valued. Personal strengths are developed by praise and encouragement, not pressure. We pride ourselves on positive parental engagement involving parents and carers in all aspects of their child's education and welfare. We are committed to safeguarding and promoting the welfare of children, staff members and visitors to the school.

Children are supported with any personal challenges they face by our pastoral staff and external professional partners where necessary. Professional partners are fully integrated into our school to support our pastoral systems and provide the highest level of care for our children. This integrated and coherent approach promotes an ethos of kindness, humility and acceptance where children are encouraged to support each other and contribute to a safe and happy environment. As a result, our children are assured and confident in the knowledge that well-managed problems will not stand in the way of their future success and, wherever possible, learning is never compromised.

Identifying and supporting young people and promoting emotional health and wellbeing is of utmost importance for our staff team at Yarnfield Primary School. We have a number of staff members who are trained Mental Health and Wellbeing Ambassadors, holding the necessary formal qualifications to ensure that our excellent pastoral systems are complimented by specialist mental health and wellbeing support for our children.

Attendance and Punctuality

At Yarnfield Primary School, we know that every school day matters. Being in school every day, on time, gives our children the best chance to achieve and succeed.

Promoting good attendance is partnership work between school and parents and carers. We encourage our families to support a positive attitude towards school, and an eagerness to learn and succeed.

We work with parents and carers to achieve high attendance and offer support with early intervention from external professional partners where necessary. Professional partners are fully integrated into our school to support our pastoral systems and provide the highest level of care for our children.





Yarnfield Primary School
SUMMIT LEARNING TRUST

Yarnfield Primary School
Yarnfield Road
Tyseley
Birmingham
B11 3PJ



☎ 0121 693 0362

Email: enquiry@yarnfieldprimary.org.uk

✕ @YarnfieldSch